

Modernized SA-6 (2K12 KUB CZ)

Mobile all weather, short range Air Defence System for the protection of vital assets on the territory (air bases, industrial plants).

With the use of the powerful semi - active missiles, the intercept coverage of the System is well in excess of 23 km in all direction. The System is able to track, intercept and engage target from 25 metres up to 12 kilometres with speed up to Mach 1,8.

The reference system configuration consists of:

- Radar vehicle
- Four Aspide 2000 missiles launchers
- Utility vehicles

Main upgrade benefits

System's upgrade includes complete replacement of surveillance and fire control radar electronics, target illuminator, new communication means and new operators' workstations.

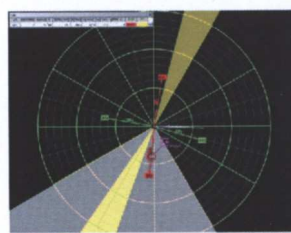
Main Upgrade Benefits Includes

- Easier Operation, reduced crew and crew load
- Operating frequencies in accordance to ECA
- Spurious and Out of the Band Emission Suppression (EMC)
- Increased ECCM Capabilities
- Mk XII IFF Interrogator integration
- New digital engageability computer
- Solid state gear control
- New electricity generators
- Capability to interface into Command and Control Networks
- Extended lifetime, high reliability
- Easier Maintenance and Repair (Sophisticated Build-In Test Equipment - BITE)
- New loading vehicle, fuel NATO harmonized
- Integrated Logistic Support

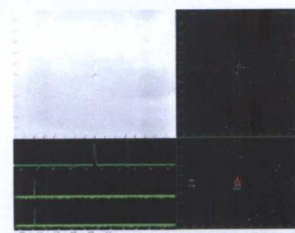


Modernized system successfully prove its high efficiency during Live Firing Exercise in 2007 and 2009

With new semi - active missiles Affordable solution for Air Defence for next 15 years



commander's display



operator's display

SA - 6 (2K12 KUB CZ) offers the answer to the requirement of air defence of high value fixed objectives (about 4000 square kilometres coverage).

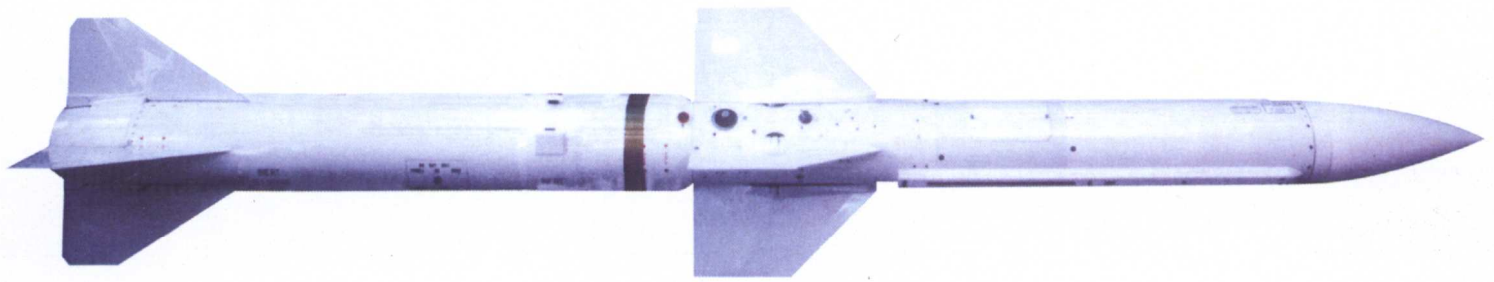
RETIA, a.s.

Pražská 341, Zelené Předměstí
530 02 Pardubice / Czech Republic

Phone: +420 466 852 531 / Fax: +420 466 852 533

E-mail: military@retia.cz

www.military-retia.cz / www.retia.cz



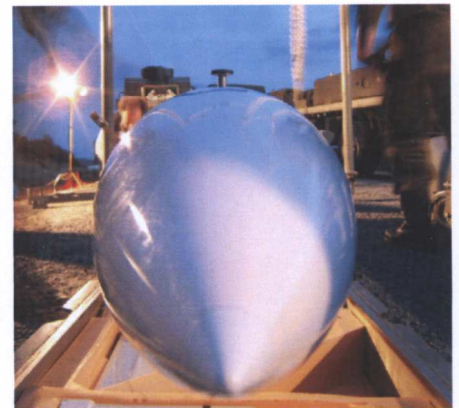
Aspide 2000 Missile

Aspide 2000 missile is a most powerful and upgraded version of the Aspide multirole missile used for Surface-to-Air applications. This missile is a field proven and in service in more than 15 countries (SSKP test proven more than 92%).

Aspide 2000 embodies all most modern electronic features to improve its guidance characteristics and effectiveness in heavy clutter and ECM environments.

To significantly improve its dynamic performances, Aspide 2000 is equipped with an enhanced single stage rocket motor capable to increase the missile speed, lateral acceleration and effective range as much as 40% with respect to Aspide multirole missile.

The operational performances of Aspide 2000 have been sized to make it capable of engaging attacking aircraft before they can release airborne stand-off rocket propelled missiles, and of intercepting these weapons once fired.



Technical Characteristics

Length:	3.700 mm	Engine:	High thrust single stage solid propellant rocket motor
Body diameter:	203 mm	Guidance:	Proportional navigation Semi-active radar homing
Motor diameter:	234 mm	Warhead:	High lethality fragmentation
Speed:	High Supersonic	Dual fuze:	Impact and proximity fuze; independent from homing seeker; effective also at very low altitude
Intercept range:	Greater than 20 km	ECCM capability:	To cope with the predicted ECM threat of beyond 2000

MBDA Contacts

Sales and Business Development
1 avenue Réaumur
92358 Le Plessis-Robinson cedex - France
Tel. + (0) 33 1 71542149
Fax + (0) 33 1 71540080
salesenquiries@mbda.net

www.mbda-systems.com